

**Umeå University**  
**Department of Computing Science**  
**5DV119 — Introduction to Database Management**  
**Examination: June 08, 2015**

Name (printed): \_\_\_\_\_

Swedish ID number: \_\_\_\_\_

Computer User-ID: \_\_\_\_\_

Signature: \_\_\_\_\_

Secret code number: 8

**Instructions: / Instruktioner:**

This examination will be graded anonymously. This page will be removed before the instructor receives the examination for grading. The secret code number given above must therefore be written on every answer page which you turn in to the examination proctor.

Students may keep the sheets containing the examination questions.

Denna skrivning rättas kodad. Detta blad kommer att avskiljas innan läraren får skrivningen för rättning. Ovanstående kod måste därför finnas på samtliga svarsblad när du lämnar skrivningen till skrivvakten.

Studenter får behålla bladen med frågorna.

**To the proctor of the examination: / Till skrivningsbevakaren:**

Detach this cover sheet from the examination and put it in the envelope which is addressed to Student Services Office, Department of Computing Science.

Avskilj detta försättsblad och stoppa i kuvert som skickas till Studentexpeditionen, Datavetenskap.



**Umeå University**  
**Department of Computing Science**  
**5DV119 — Introduction to Database Management**  
**Examination: June 08, 2015**

Secret code number: 8

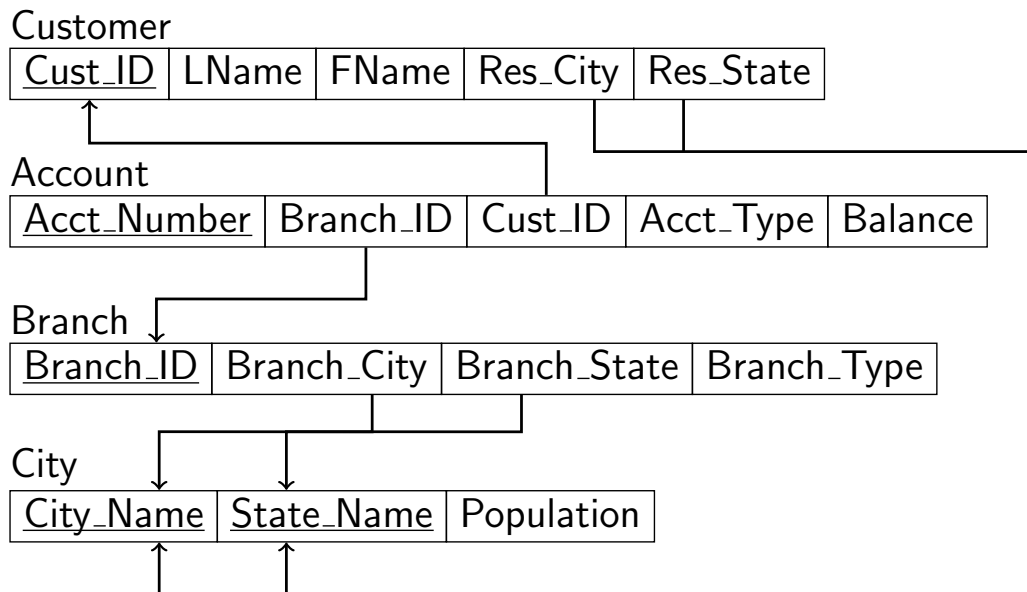
1. Answers may be written in English or Swedish. However, all technical terms which do not have an absolutely standard representation in Swedish must be given in English.
2. An English/X - X/English dictionary may be used. No other help materials are allowed.
3. Answers must be written on the official university answer sheets which are provided the sheets in numerical order of the problems, and write on only one side of the paper. Write only the question number and your secret code number on these pages; do not write your name or ID. Fields on the answer sheets: **Kod**: your secret code; **Uppgift nr**: problem number; **Sidnr**: page number; **poäng**: points (leave blank).
4. Show your work wherever possible.
5. The examination has a total of 1000 points.
6. For each problem, you have the choice, for each part, to give a solution for that part, or to skip it for partial credit. In the table below, place an X in the position for any problem for which you have attempted a solution, and which you wish to have graded. It is extremely important that you fill in this table properly, because of the following option. For any box which is left blank, the associated question will not be graded, and you will instead be awarded 15% of the points for that question. Your decision to leave a box blank is definitive, so be very careful. For example, If you leave box 8(b) blank, your answer to that question will not be graded, even if it is completely correct. On the other hand, if you place an X in box 8(b), but provide no answer whatsoever to that question, you will not receive 15% of the points for that question. It is strongly recommended that you use a pencil, in case you change your mind!

For a problem with only one part, consider that part to be labelled by (a).

Prob	1	2	3	4	5	6	7	8
(a)								
(b)					■			
(c)					■			
(d)					■	■		■
(e)					■	■		■



The following schema applies to Problems 1 through 4. In each case, the primary key is underlined, and the arrows run from foreign keys to their primary counterparts. In answering the queries, it may be assumed that each relation is nonempty; that is, that each relation contains at least one tuple.



The following queries apply to Problems 1 through 3, and reference the schema defined above.

- Find the customer ID of those customers who live in a city with a population of at least 100000.
- Find the customer ID of those customers who have an account in a branch city named **Burlington** and an account in a branch state named **IA**. These two accounts need not be distinct, but they may be. A correct answer must handle either case.
- Find the customer ID of those customers who have an account of type **savings** in some branch somewhere but no account (of any type) in a branch of type **satellite**.
- Find the branch ID of those branches which house an account of every type which is listed in the **Account** relation. It may be assumed that there is at least one account type.
- Find the branch ID of those branches which house accounts of exactly two distinct types.

**Note:** In the above schema, the attributes **Customer\_LName** and **Customer\_FName** identify the last and first names of the customer, respectively, while **Res\_City** and **Res\_State** identify the city and state of residence of the customer, respectively.

(1: 150 points total; 30 points for each part) Solve each of the five queries (a) - (e) on the preceding page using the relational algebra. Functional operators, such as count and average, may not be used. Use the join notation described in the course notes: (The symbol  $\bowtie$  is used to denote join; in the absence of subscripts it denotes the natural join; any other join conditions must be specified explicitly using subscripts.)

(2: 150 points total; 30 points for each part) Solve each of the five queries (a) - (e) on the preceding page using the tuple relational calculus. Functional operators, such as count and average, may not be used.

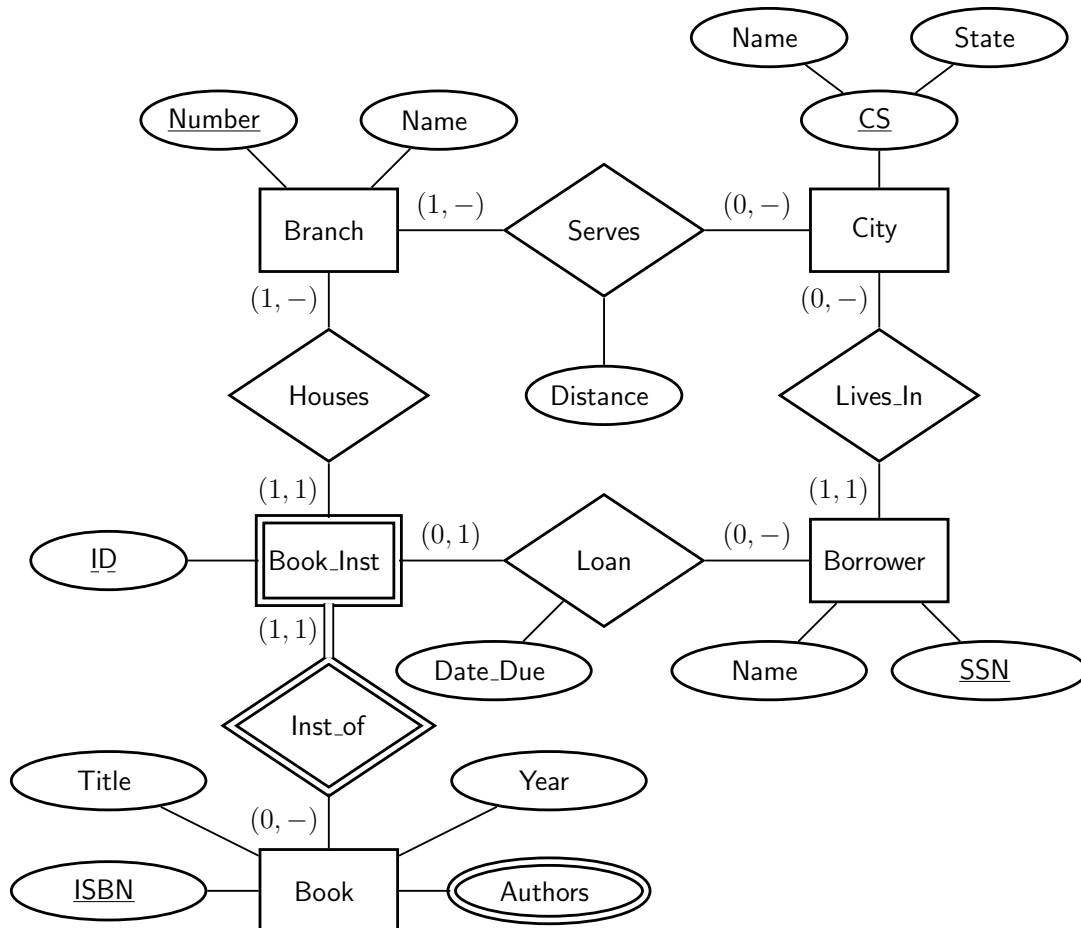
(3: 150 points total; 30 points for each part) Solve each of the five queries (a) - (e) on the preceding page using SQL. To keep the solutions simple and consistent, the following conditions apply, unless specifically stated to the contrary:

- (i) The solution must consist of a single SQL directive. Creation and subsequent use of temporary tables is not permitted.
- (ii) Standard SQL operations such as `INTERSECT` and `EXCEPT` may be used even though they are not supported by MySQL.
- (iii) Uppercase and lowercase letters may be used interchangeably.
- (iv) Subqueries involving `SELECT` are allowed only in the `WHERE` and `HAVING` fields of queries and subqueries, and in the `SET` fields of `UPDATE` commands.
- (v) Aggregate operators, such as `COUNT`, `SUM`, `AVG`, `MAX`, and `MIN` may **not** be used.
- (vi) Unless specified to the contrary, duplicates should be eliminated from the answers.

(4: 150 points total; 30 points for each part) Provide solutions, in SQL, to the following additional queries. Conditions (i)-(iii) from Problem 3 above apply here as well. On the other hand, aggregate operations may be used, as may subqueries in the `FROM` clause.

- (a) For each `City_Name` in the `City` relation, find the number of distinct states which have a city of that name.
- (b) For each `Branch_ID` in the `Branch` relation, list the total number of accounts held at that branch, as well as the total number of distinct `Acct_Types` for accounts held at that branch. List the correct answer even in the case that the `Branch_IDs` of those branches house no accounts.
- (c) List the customer ID of all customers who have a minimum balance of at least 500 in each account which is held in a branch of type `main`. List the minimum balance, over all such accounts, for every such customer as well.
- (d) Find the customer ID, as well as the number of such accounts, of that customer who has the greatest number of accounts of type `transaction`. In case of a tie, list all such customers. Assume that there is at least one account of type `transaction` in the database.
- (e) Add 100 to the balance of all accounts of type `bonus`.

(5: 125 points) Shown below is an ER-diagram for a library database. Using the techniques developed in the course, map this diagram into an equivalent relational schema. Show all keys, primary and foreign, and link foreign keys to their primary partners. Although it is not strictly required to show the steps in the translation process, you will receive far more partial credit in the case of an error if you document your solution process carefully.



- If a primary and/or foreign key consists of more than one attribute, make sure that your notation identifies and links these composite keys as groups.
- Use design decisions which produce the simplest relational schema. If there is a choice between creating an additional relation and adding attributes to an existing one, choose the latter. Similarly, a foreign key which cannot take on null values is to be preferred to one which can.

**Notes:**

- The  $(x, y)$  notation gives the minimum and maximum number of times that a given instance of the entity may participate in the relationship. Thus,  $(1, 1)$  means exactly one, and  $(0, -)$  means any number.
- *Book\_inst* = book instance; *Inst\_of* = instance of; *CS* = city state.
- A *book* is an entity with an ISBN; e.g., the course textbook.
- A *book instance* is a physical book; e.g., your copy of the course textbook.

(6: 75 points) Let  $\mathbf{E}_0$  be the relational schema with the single relation  $R[ABCDE]$ , constrained by the FDs  $\mathcal{F}_0 = \{A \rightarrow E, C \rightarrow ABD, DE \rightarrow B\}$ .

- (a: 25 points) Using the BCNF decomposition algorithm, find a lossless BCNF decomposition of  $\mathbf{E}_0$ . Show the join tree for your decomposition.
- (b: 25 points) If there is a lossless BCNF decomposition of  $\mathbf{E}_0$  which is also dependency preserving, then give such a decomposition. If there is no such decomposition, explain why not.
- (c: 25 points) If there is a lossless and fully independent decomposition of  $\mathbf{E}_0$ , give such a schema and explain why it has the required properties. If there is no such schema, explain why not.

(7: 100 points) Let  $\mathbf{E}_1$  be the relational schema with the single relation  $R[ABCDEFGH]$ , constrained by the FDs  $\mathcal{F}_1 = \{A \rightarrow E, ADE \rightarrow BC, CD \rightarrow B, EF \rightarrow AD\}$ .

- (a: 20 points) Give a canonical cover for  $\mathcal{F}_1$ .
- (b: 20 points) Identify the candidate keys of  $\mathbf{E}_1$ .
- (c: 20 points) Apply the synthesis algorithm to this schema to obtain a *lossless* and dependency-preserving 3NF decomposition.
- (d: 20 points) Determine whether or not the decomposition identified in (c) is in BCNF. You must justify your answer with a clear explanation in order to receive credit.
- (e: 20 points) Determine whether or not the decomposition identified in (c) is fully independent. You must justify your answer with a clear explanation in order to receive credit.

(8: 100 points) Answer the following questions about authorization, security, and privacy.

- (a: 35 points) Explain briefly what is meant by an *individual tracker* on a statistical database, and illustrate with a simple example.
- (b: 30 points) Describe the strategy of *minimum query-set control*, and how it addresses the problems of individual trackers.
- (c: 35 points) Explain what a *statistical tracker* is, and how it can be used to extract information about individuals from a statistical database despite the enforcement of minimum query-set control. Illustrate with a simple example.